



## Social Determinants and Community Behavior Against Implementation of the Covid-19 Health Protocol: Systematic Review

Teguh Purnomo<sup>1</sup>, Budi Aji<sup>1</sup>, Arih Diyaning Intiasari<sup>1</sup>

<sup>1</sup>Master of Public Health, Faculty of Health Sciences, General Soedirman University, Purwokerto

\*Corresponding Author: Teguh Purnomo

Email: [ellyan.gaul18@gmail.com](mailto:ellyan.gaul18@gmail.com)



### Article Info

#### Article history:

Received 14 March 2025

Received in revised form 13 April March 2025

Accepted 27 April 2025

#### Keywords:

Covid-19

Health Protocols

Social Determinants

Community Behavior

### Abstract

The incidence of coronavirus disease (Covid-19) is the latest challenge facing the international community. Health protocols such as social distancing, wearing masks, washing hands and limiting community activities are implemented in the community to prevent a spike in coronavirus cases. The policy of implementing health protocols in the community results in the community itself not complying with the guidelines. For this reason, researchers conducted research to determine social determinants and explanations of community behavior regarding the implementation of the 2019 coronavirus disease (Covid-19) health protocol. This study used a systematic review design where researchers searched for articles from the Google Scholar and PubMed databases. From the search results, six articles were then considered that met the inclusion criteria. Findings show that community knowledge, education, attitudes and behavior, age and gender influence the implementation of medical procedures related to COVID-19. Factors that influence the implementation of health protocols to prevent the spread of the corona virus disease (Covid-19) in society include awareness of the implementation of health protocols, limited infrastructure, limited health personnel; and public attitudes towards health protocols. Apart from that, behavioral, psychosocial and cognitive factors of the population in accordance with socio-cultural, demographic and health characteristics also influence the implementation of health protocols during the COVID-19 pandemic. The need for community attitudes such as the perception of high risk of COVID-19 encourages individuals to follow health protocols with more discipline, and the existence of social environmental support such as positive social interactions can increase individual motivation to comply with existing rules.

## Introduction

The Corona virus was first discovered in December 2019, when the first infected person was found in Wuhan, China. This incident quickly spread not only in China but throughout the world (Wang et al., 2020). This is what finally made WHO declare that the world is experiencing a coronavirus pandemic. Clinical manifestations of Covid-19 include acute respiratory disease, some show no symptoms, some experience septic shock, and some experience multi-organ failure which leads to death (Sarkesh et al., 2020). Case analysis shows that approximately 80% of cases of coronavirus infection lead to a mild course of the disease (no pneumonia or mild pneumonia).

Although some cases recovered completely, 14% became seriously ill and 6% were in critical condition requiring treatment. As a new variant of the virus, there is no treatment or vaccine available for Covid-19 (Waliyanti et al., 2021). The coronavirus is transmitted through respiratory droplets. If someone infected with COVID-19 sneezes, coughs, or interacts with other people without wearing a mask, they can transmit the disease to other people. The SARS-CoV-2 virus has been detected in respiratory, fecal and blood samples. The SARS-CoV-2 virus has been detected in respiratory, fecal and blood samples (Wang et al., 2020). As of June 2020, the number of new coronavirus infections had spread to 216 countries, with 7,690,708 positive confirmed cases and 427,630 patients (Ferreira et al., 2020).

Indonesia itself is one of the countries affected by the spread of Covid-19, with 38,277 positive cases detected, of which 14,531 patients were declared cured of Covid-19, and 2,134 people died (Waliyanti et al., 2021). The government has asked the public to respect health protocol rules because the number of coronavirus infections is expected to increase (Tabari et al., 2020). The implementation of the COVID-19 prevention protocol in Indonesia is still an obstacle, but in this case the public is expected to continue to comply with health protocols and adopt a new lifestyle (new normal) while the COVID-19 pandemic is still ongoing. One form of implementing health protocols is to maintain cleanliness and avoid direct contact with positive COVID-19 patients (Bizzoca et al., 2020).

Next, wear a mask and wash your hands with soap or hand sanitizer when traveling (Bloomfield et al., 2007). Then, practice social distancing by maintaining a distance of 1 meter and covering your mouth with a tissue. Cough or sneeze into the inside of your arm or use correct cough etiquette (Sari & Fawzi, 2021). The government has established rules for implementing health protocols to prevent a spike in cases of the corona virus disease (Covid-19). As a result of the physical restrictions directive, this directive actually led to non-compliance with community behavior, such as people still crowding together and not wearing masks when leaving the house, as well as people not participating due to COVID-19 (Sari & Fawzi, 2021).

During the Covid-19 pandemic, quarantine compliance or compliance with health protocols was determined by community attitudes and perceptions, social norms, and community perceptions of their own behavior (Raodhah et al., 2023). Awareness of the risks and impacts of transmission (economic and health) of Covid-19 will increase people's self-protection behavior (washing hands, maintaining distance, wearing masks). Indeed, fear and anxiety about the presence of the Covid-19 virus plays an important role in influencing people's behavior in implementing health protocols (Harper et al., 2021).

A study by (Zhao et al., 2021) shows that the level of willingness to carry out medical procedures during the Covid-19 pandemic is determined by the level of education, marital status and socio-economic status of college graduates. Married people and those with high socioeconomic status are more likely to self-isolate and follow health protocols during the COVID-19 pandemic (Amirudin et al., 2021). The existence of the Covid-19 pandemic can raise public concerns about their knowledge and awareness of the risks associated with Covid-19 (Abdel et al., 2022). Therefore, the public's desire to implement health protocols during the Covid-19 pandemic is increasing (Filip et al., 2022). For example, the use of masks is clearly determined by the surrounding environment, meaning that social norms or habits influence the behavior of other individuals. Apart from that, the use of media is also important to spread social values or norms so that people better follow government recommendations.

## Methods

The research design used a systematic review of six journal articles. This article was found by searching the Google Scholar and Pubmed databases. The selected papers were published between 2020 and 2023. The keywords used were "Covid-19", "health protocols", "social determinants", and "community behavior". The publication criteria are articles from 2020 to

2023, free full text, and articles related to the research theme. Exclusion criteria now apply to papers that are incomplete or not accessible in free full text and do not match the researcher's topic. A search for journal articles in the database yielded 2,490 articles. Selection was then made based on title, and a total of 2,470 articles were excluded. 20 articles were found and 10 articles were again excluded from display in the summary section. Next, the researcher read all 10 papers, but four papers were excluded because they were not specific to the researcher's topic. After going through the selection stage, six articles were obtained and then read carefully for further study.

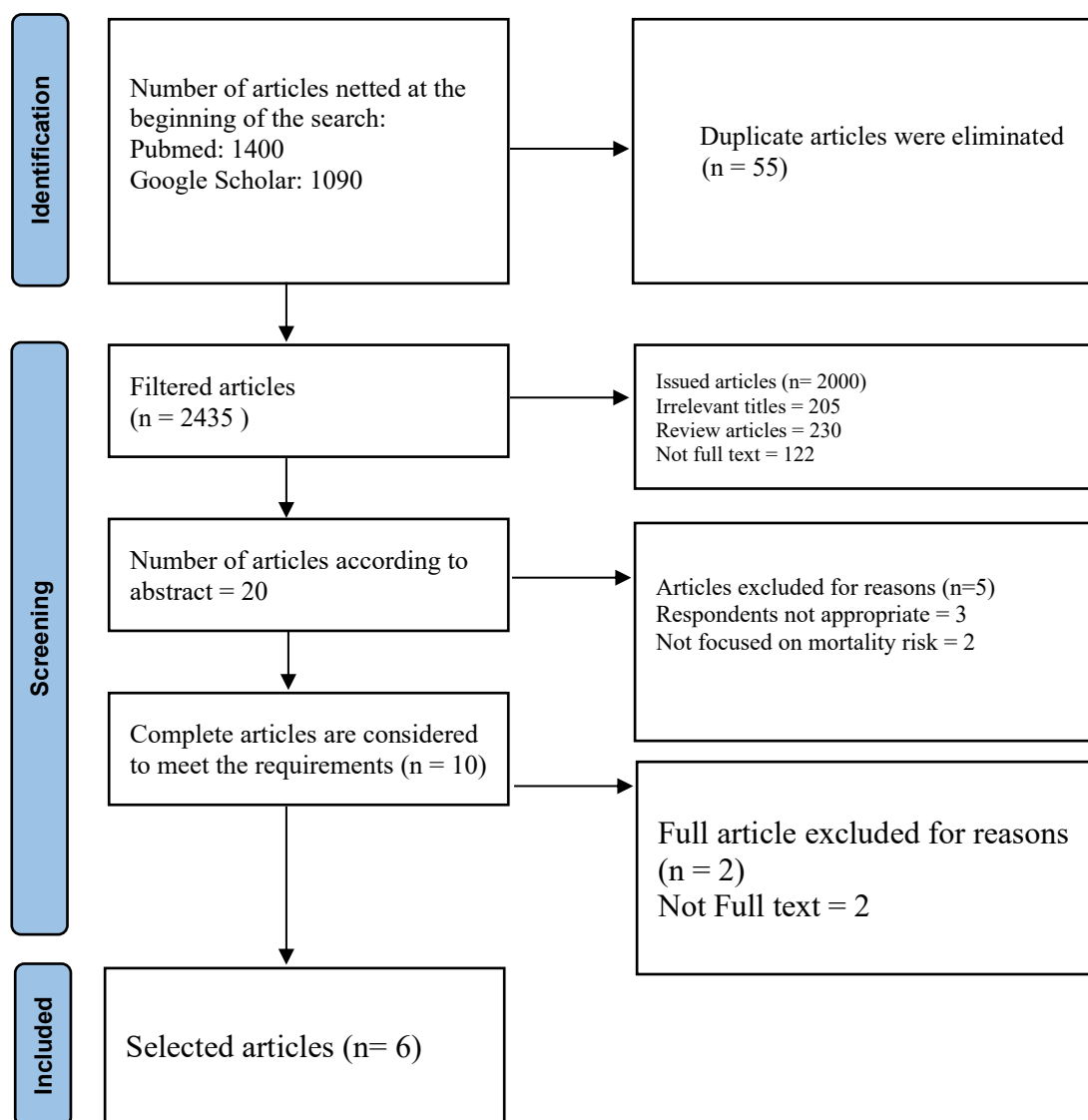


Figure 1. Prisma Flowchart

## Results and Discussion

Based on the search results, 6 articles were found that met the inclusion and exclusion criteria. The characteristics of each article can be seen in Table 1.

Table 1. Journal Search Results

No	Author/Year	Title	Research Design	Research Sample	Results
1.	(Sari & Fawzi, 2021)	Determinants of Compliance With The	Cross-sectional	114 community	The average age of respondents is 31-35 years (40%), with the highest

		Execution of The Covid -19 Wellbeing Convention Within The Community of Kediri City		respondents in Kediri	educational background being high school (40%),p value (0.000) which means the regression model is appropriate and shows that the variables knowledge, personality and anxiety influence/influence the variable compliance with the Covid-19 health protocol
2.	(Waliyanti et al., 2021)	Determinants components influencing the usage of the Covid – 19 wellbeing convention within the community	Qualitative Method	12 respondents in the city Temanggung Participants (community, village officials, and health workers) selected using purposive sampling technique.	Based on the research results, the implementation of health protocols to prevent the spread of COVID-19 by the community in the Regency Temanggung was influenced by several factors such as awareness of implementing health protocols and limited Masu infrastructure, limited health personnel, and supervision of officers. It has been proven that factors such as awareness of the new coronavirus infection have an influence. and public attitudes towards health protocols.
3.	(Shushtari et al., 2021)	Social Determinants of Adherence to Covid-19 Preventive Rules in Iran : Subjective Think about	Qualitative Method	The 15 respondents consisted of health experts and policy makers in Teheran, Iran	This study uses targeted content analysis methods to identify social determinants of compliance with COVID-19 prevention guidelines in Iran. Analysis of interviews with health professionals and policy makers revealed the following structural determinants of compliance with COVID-19 prevention guidelines: B. Cross-sectoral determinants such as socio-economic and political context, cultural and social values and socio-economic status, social cohesion and intermediate determinants, living conditions, working conditions, etc.
4.	Deny Sadeghi 、 Balal Izanloo 、 Samaneh	Hazard Recognition and Social Variables	Cross sectional	371 samples aged 18 – 60 years, 224	This study aims to identify psychological and social risk factors that influence

	Dehgan Nezhad 、 Maryam Emamina, 2022	Influencing Defensive Behaviors Amid the Covid-19 Widespread in an Iranian Sampel		women and 147 men. selected through convenience sampling method from Karaj City	behavior in implementing health protocols during the COVID-19 pandemic in Iran. The results of the study show that psychological factors, risk assessment and susceptibility to infectious diseases can influence behavior in implementing Covid-19 health protocols. Participants who assess the risk of COVID-19 above average for themselves show more preventive behavior. On the other hand, protective behavior was more common in people quarantined for more than a month. The duration of quarantine has made a difference in the rate of use of preventive measures and this may indicate that quarantined people are more protective of their health.
5.	(Raude et al., 2020)	Determinant of Preventive Behaviors in Reaction to the Covid-19 Widespread In France : Comparing the Sociocultural, Psychosocial, and Social Cognitive Clarifications	Cross Sectional	Sample study The age range is 18-90 years, where the total sample is 2,000 participants in survey 1 and 2,003 participants in survey the 2nd	This study shows that there are important factors that differentiate research participants who were diligent in taking COVID- 19 prevention measures in the early stages of the pandemic from those who were less diligent. shows the mean values and 95% confidence intervals for various measures related to participants' behavioral, psychosocial, and cognitive variables according to their sociocultural, demographic, and health characteristics.
6.	(Juradi et al., 2021)	Factors Related to Community Behaviors in Rural Area In Preventing The Covid - 19	Cross Sectional	Sample of 395 people, research location in Baebunta, North Lawu	Gender in this study has a relationship with people's behavior in preventing the Covid-19 pandemic, of the 395 respondents, 97 people (59.9%) were women and behaved better compared to 111 men (47.6%). Bivariate analysis of the gender variable on COVID-19 pandemic prevention behavior revealed (p =

					0.017) < . 0.05. Bivariate analysis of education variables on COVID-19 pandemic prevention behavior shows (p = 0.011) < . 0.05. These results show that education has a significant relationship with behavior to prevent the COVID-19 pandemic in the sub district Bebunta Ward Kitakagiri.
--	--	--	--	--	--

According to Bhagavathula et al. (2020), Knowledge about the new coronavirus infection is very important to prevent the increase in the number of people infected with the new coronavirus. Knowledge about COVID-19 patients can be interpreted as the result of the patient's knowledge about the disease, understanding of the disease, prevention, treatment and complications (Bhimraj et al., 2024). On the other hand, education is a benchmark for assessing the ability to interact effectively with other people, and awareness of implementing health protocols is still low (Sari & Fawzi, 2021). They will have access to more, faster, and more accurate information to influence their actions. Next are attitudes and behavior. People's attitudes and behavior influence health (Raude et al., 2020).

Align with research from Balqis (2021), age is one factor that can influence behavior. Based on research (Juradi et al., 2021), age has been proven to be related to behavior in implementing health protocols. The older you are, the higher your risk of experiencing severe symptoms if infected with COVID-19. Therefore, the older you get, the more you pay attention to your health, including maintaining health protocols. Gender factors are also mediators (Waliyanti et al., 2021). Women will be better able to implement health protocols, implement policies better, and comply better with existing rules and regulations.

Family support is needed as an external motivator to shape health behavior, especially preventive behavior during the COVID-19 pandemic (Sadeghi et al., 2022). Collaboration with family and loved ones is very important to increase preparedness and preventive behavior against COVID-19. Because transmission of COVID-19 occurs through droplet transmission from person to person, various prevention efforts can help break the chain of transmission of COVID-19 in the community (Jayaweera et al., 2020). The government has prepared guidelines for preventing the spread of COVID-19, including implementing health protocols (Banakar et al., 2020). The health protocol currently implemented is known as 5M which includes wearing masks, maintaining distance, washing hands, staying away from crowds and limiting freedom of movement (Sadeghi et al., 2022).

Factors that influence the implementation of health protocols to prevent the spread of the corona virus disease (COVID-19) in the community include awareness of the implementation of health protocols, limited infrastructure, limited supervision of disease (COVID-19) officials, and community attitudes (Fattahi et al., 2022). Regarding health protocols (Waliyanti et al., 2021). Apart from that, behavioral, psychosocial and cognitive factors of the population in accordance with socio-cultural, demographic and health characteristics also influence the implementation of health protocols during the COVID-19 pandemic (Raude et al., 2020).

## Conclusion

The implementation of the COVID-19 health protocol shows that knowledge, attitudes and education play an important role in community compliance. Apart from that, social factors such as the environment and community support also influence behavior to prevent virus

transmission. Knowledge and education factors, the role of community attitudes and social support from the community environment.

## References

- Abdel Fattah, F. A. M., Dahleez, K. A., Mohamed, A. H. H., Okour, M. K., & AL Alawi, A. M. M. (2022). Public health awareness: knowledge, attitude and behaviors of the public on health risks during COVID-19 pandemic in sultanate of Oman. *Global Knowledge, Memory and Communication*, 71(1/2), 27-51. <https://doi.org/10.1108/GKMC-10-2020-0152>
- Amirudin, A., Urbański, M., Saputra, J., Johansyah, M. D., Latip, L., Tarmizi, A., & Afrizal, T. (2021). The impact of the covid-19 self-isolation policy on the occupations of vulnerable groups. *International Journal of Environmental Research and Public Health*, 18(12), 6452. <https://doi.org/10.3390/ijerph18126452>
- Balqis, R. R. (2021). Faktor-Faktor Yang Mempengaruhi Perilaku Adaptif Anak Usia Dini. *Auladuna: Jurnal Prodi Pendidikan Guru Madrasah Ibtidaiyah*, 3(1), 85-90.
- Banakar, M., Bagheri Lankarani, K., Jafarpour, D., Moayedi, S., Banakar, M. H., & MohammadSadeghi, A. (2020). COVID-19 transmission risk and protective protocols in dentistry: a systematic review. *BMC oral health*, 20, 1-12. <https://doi.org/10.1186/s12903-020-01270-9>
- Bhagavathula, A. S., Aldhaleei, W. A., Rahmani, J., Mahabadi, M. A., & Bandari, D. K. (2020). Novel coronavirus (COVID-19) knowledge and perceptions: a survey on healthcare workers. *MedRxiv*, 2020-03. <https://doi.org/10.1101/2020.03.09.20033381>
- Bhimraj, A., Morgan, R. L., Shumaker, A. H., Lavergne, V., Baden, L., Cheng, V. C. C., ... & Falck-Ytter, Y. (2024). Infectious Diseases Society of America Guidelines on the treatment and management of patients with COVID-19 (April 2020). *Clinical Infectious Diseases*, 78(7), e83-e102. <https://doi.org/10.1093/cid/ciaa478>
- Bizzoca, M. E., Campisi, G., & Lo Muzio, L. (2020). Covid-19 pandemic: What changes for dentists and oral medicine experts? A narrative review and novel approaches to infection containment. *International journal of environmental research and public health*, 17(11), 3793. <https://doi.org/10.3390/ijerph17113793>
- Bloomfield, S. F., Aiello, A. E., Cookson, B., O'Boyle, C., & Larson, E. L. (2007). The effectiveness of hand hygiene procedures in reducing the risks of infections in home and community settings including handwashing and alcohol-based hand sanitizers. *American journal of infection control*, 35(10), S27-S64. <https://doi.org/10.1016/j.ajic.2007.07.001>
- Fattahi, H., Seproo, F. G., & Fattahi, A. (2022). Effective factors in people's preventive behaviors during COVID-19 pandemic: a systematic review and meta-synthesis. *BMC Public Health*, 22(1), 1218. <https://doi.org/10.1186/s12889-022-13621-y>
- Ferreira, E. D. O., Penna, B., & Yates, E. A. (2020). Should we be worried about clostridioides difficile during the SARS-CoV2 pandemic?. *Frontiers in Microbiology*, 11, 581343. <https://doi.org/10.3389/fmicb.2020.581343>
- Filip, R., Gheorghita Puscaselu, R., Anchidin-Norocel, L., Dimian, M., & Savage, W. K. (2022). Global challenges to public health care systems during the COVID-19 pandemic: a review of pandemic measures and problems. *Journal of personalized medicine*, 12(8), 1295. <https://doi.org/10.3390/jpm12081295>

- Harper, C. A., Satchell, L. P., Fido, D., & Latzman, R. D. (2021). Functional fear predicts public health compliance in the COVID-19 pandemic. *International journal of mental health and addiction*, 19(5), 1875-1888. <https://doi.org/10.1007/s11469-020-00281-5>
- Jayaweera, M., Perera, H., Gunawardana, B., & Manatunge, J. (2020). Transmission of COVID-19 virus by droplets and aerosols: A critical review on the unresolved dichotomy. *Environmental research*, 188, 109819. <https://doi.org/10.1016/j.envres.2020.109819>
- Juradi, N. W., Arman, A., & Jafar, N. (2021). Factors Related to Community Behaviors in Rural Area in Preventing The Covid-19. *Journal of Aafiyah Health Research (JAHR)*, 2(2), 55-63. <https://doi.org/10.52103/jahr.v2i2.738>
- Raodhah, S., Adnan, Y., Amansyah, M., & Alam, S. (2023). Hubungan Persepsi Risiko Pandemi COVID-19 dan Pengetahuan dengan Kepatuhan terhadap Vaksinasi dan Protokol Kesehatan. *Jurnal Ilmu Kesehatan Masyarakat*, 12(01), 1-10. <https://doi.org/10.33221/jikm.v12i01.1839>
- Raude, J., Lecrique, J. M., Lasbeur, L., Leon, C., Guignard, R., Du Roscoät, E., & Arwidson, P. (2020). Determinants of preventive behaviors in response to the COVID-19 pandemic in France: comparing the sociocultural, psychosocial, and social cognitive explanations. *Frontiers in Psychology*, 11, 584500. <https://doi.org/10.3389/fpsyg.2020.584500>
- Sadeghi, N., Izanloo, B., Dehghan Nezhad, S., & Emaminia, M. (2022). Risk Perception and Social Factors Affecting Protective Behaviors During the COVID-19 Pandemic in an Iranian Sample. *Practice in Clinical Psychology*, 10(4), 287-298. <http://dx.doi.org/10.32598/jpcp.10.4.783.2>
- Sari, D. K., & Fawzi, A. (2021). Determinants of compliance with the implementation of the COVID-19 health protocol in the community of Kediri City. *Journal Of Nursing Practice*, 5(1), 189-195. <https://doi.org/10.30994/jnp.v5i1.171>
- Sarkesh, A., Sorkhabi, A. D., Sheykhsaran, E., Alinezhad, F., Mohammadzadeh, N., Hemmat, N., & Baghi, H. B. (2020). Extrapulmonary clinical manifestations in COVID-19 patients. *The American journal of tropical medicine and hygiene*, 103(5), 1783. <https://doi.org/10.4269/ajtmh.20-0986>
- Shushtari, Z. J., Salimi, Y., Ahmadi, S., Rajabi-Gilan, N., Shirazikhah, M., Biglarian, A., ... & Gharehghani, M. A. M. (2021). Social determinants of adherence to COVID-19 preventive guidelines: a comprehensive review. *Osong public health and research perspectives*, 12(6), 346. <https://doi.org/10.24171/j.phrp.2021.0180>
- Tabari, P., Amini, M., Moghadami, M., & Moosavi, M. (2020). International public health responses to COVID-19 outbreak: a rapid review. *Iranian Journal of Medical Sciences*, 45(3), 157. <https://doi.org/10.30476/ijms.2020.85810.1537>
- Waliyanti, E., Sulistiyaningrum, A., Oktariza, A., Nurrahaf, S. H., & Satria, F. E. (2021). Determinants factors affecting the implementation of the COVID-19 health protocol in the community. *Bali Medical Journal*, 10(3), 1058-1065. <http://dx.doi.org/10.15562/bmj.v10i3.2863>
- Wang, W., Tang, J., & Wei, F. (2020). Updated understanding of the outbreak of 2019 novel coronavirus (2019-nCoV) in Wuhan, China. *Journal of medical virology*, 92(4), 441-447. <https://doi.org/10.1002/jmv.25689>

- Wang, W., Xu, Y., Gao, R., Lu, R., Han, K., Wu, G., & Tan, W. (2020). Detection of SARS-CoV-2 in different types of clinical specimens. *Jama*, 323(18), 1843-1844. <https://doi.org/10.1001/jama.2020.3786>
- Zhao, X., Lan, M., Li, H., & Yang, J. (2021). Perceived stress and sleep quality among the non-diseased general public in China during the 2019 coronavirus disease: a moderated mediation model. *Sleep medicine*, 77, 339-345. <https://doi.org/10.1016/j.sleep.2020.05.021>